

**This electronic collection of documents is provided  
for the convenience of the user  
and is Not a Certified Document –**

**The documents contained herein were originally issued  
and sealed by the individuals whose names and license  
numbers appear on each page, on the dates appearing  
with their signature on that page.**

**This file or an individual page  
shall not be considered a certified document.**

# I-85 BY-PASS / ALAMANCE CH. RD. RD. INTERCHANGE



# I-85 BY-PASS / HWY 220 INTERCHANGE

**TREES**

TREES = 70 SQ. FT PER

**274 SQ. YDS.**

**B**

52.3  
49.2  
45.2  
55.3  
466.8

**A**

60.4  
73.1  
73.9  
56.7  
4,209.2

**468 SQ. YDS**

**355 SQ. YDS.**

**C**

36.8  
69.3  
54.8  
25.7  
40  
3,193.2

**D**

63.3  
70.1  
71.4  
69.2  
4,656.4

**517 SQ. YDS.**

EXT 122B US-220S/I-73S

EXIT 122A I-73N

EXIT 122A-B

EXIT 122A-B

EXIT 122A-B

EXIT 122A-B

I-85N ON RAMP

I-85N ON RAMP

I-85N ON RAMP

I-85 S

I-85 S

I-85 S

I-85 N

I-85 N

I-85 N

US HIGHWAY 220 S

US HIGHWAY 220 N

EXIT 122C US-220N ON RAMP

I-73 N ON RAMP

OFF RAMP

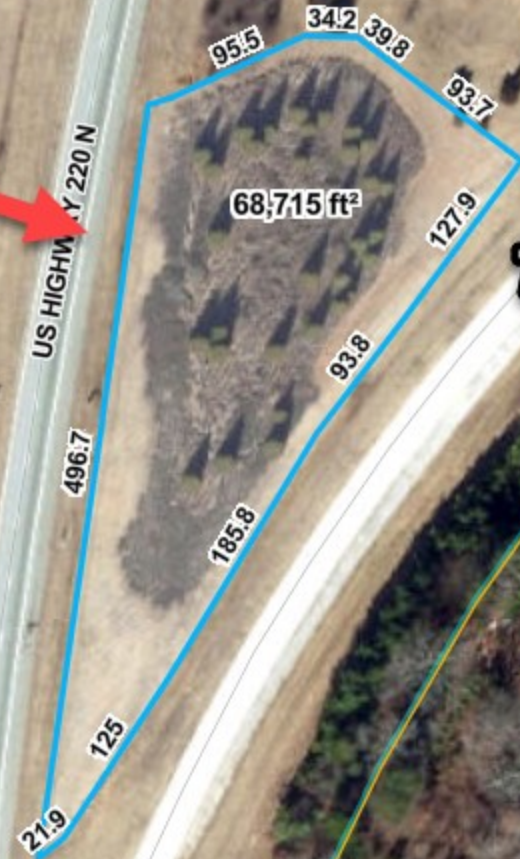
OFF RAMP

86277



# I-85 BY-PASS / HWY 220

**A**



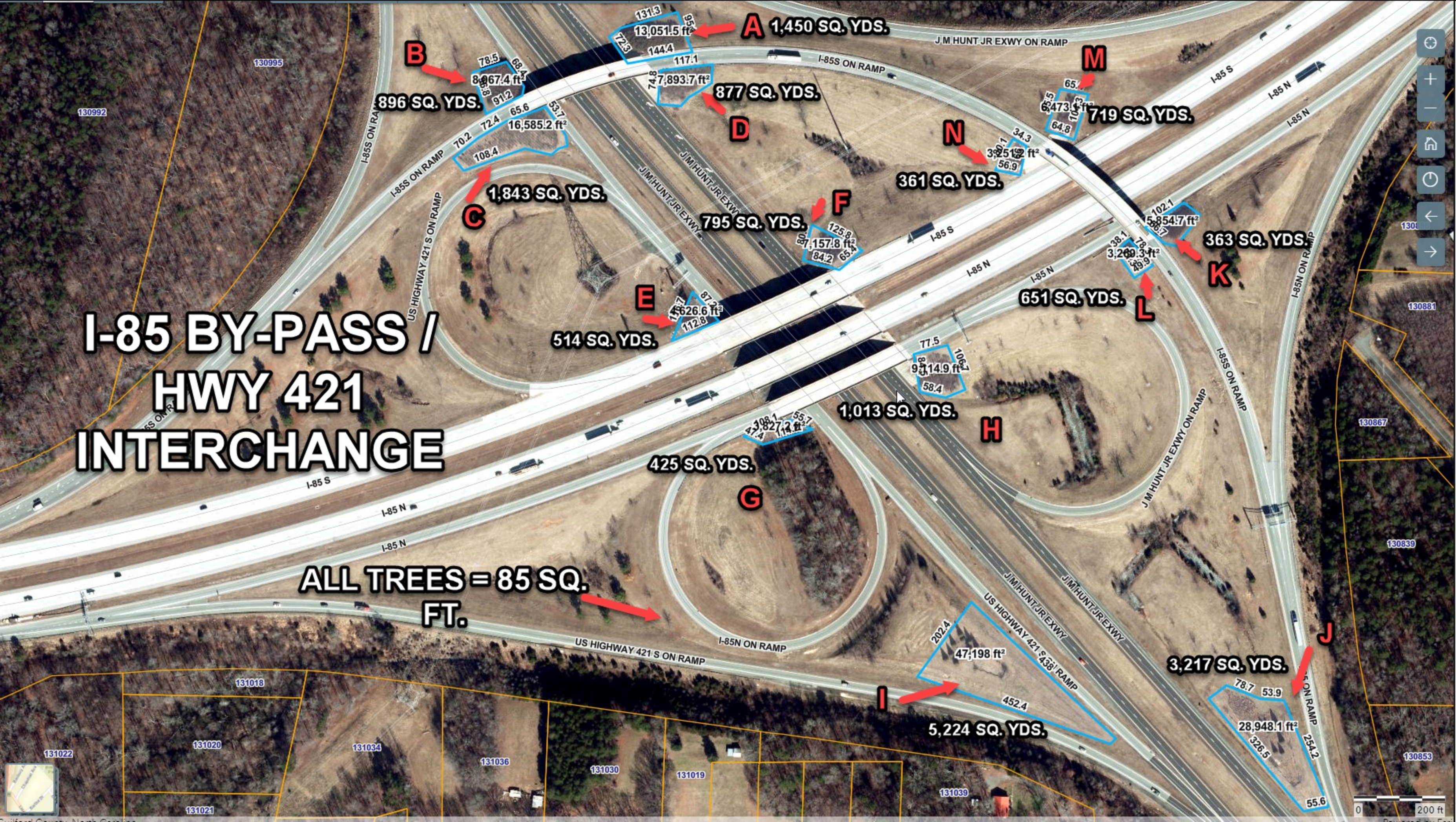
**7,635 SQ. YDS.**

**TREES TO MAINTAIN**

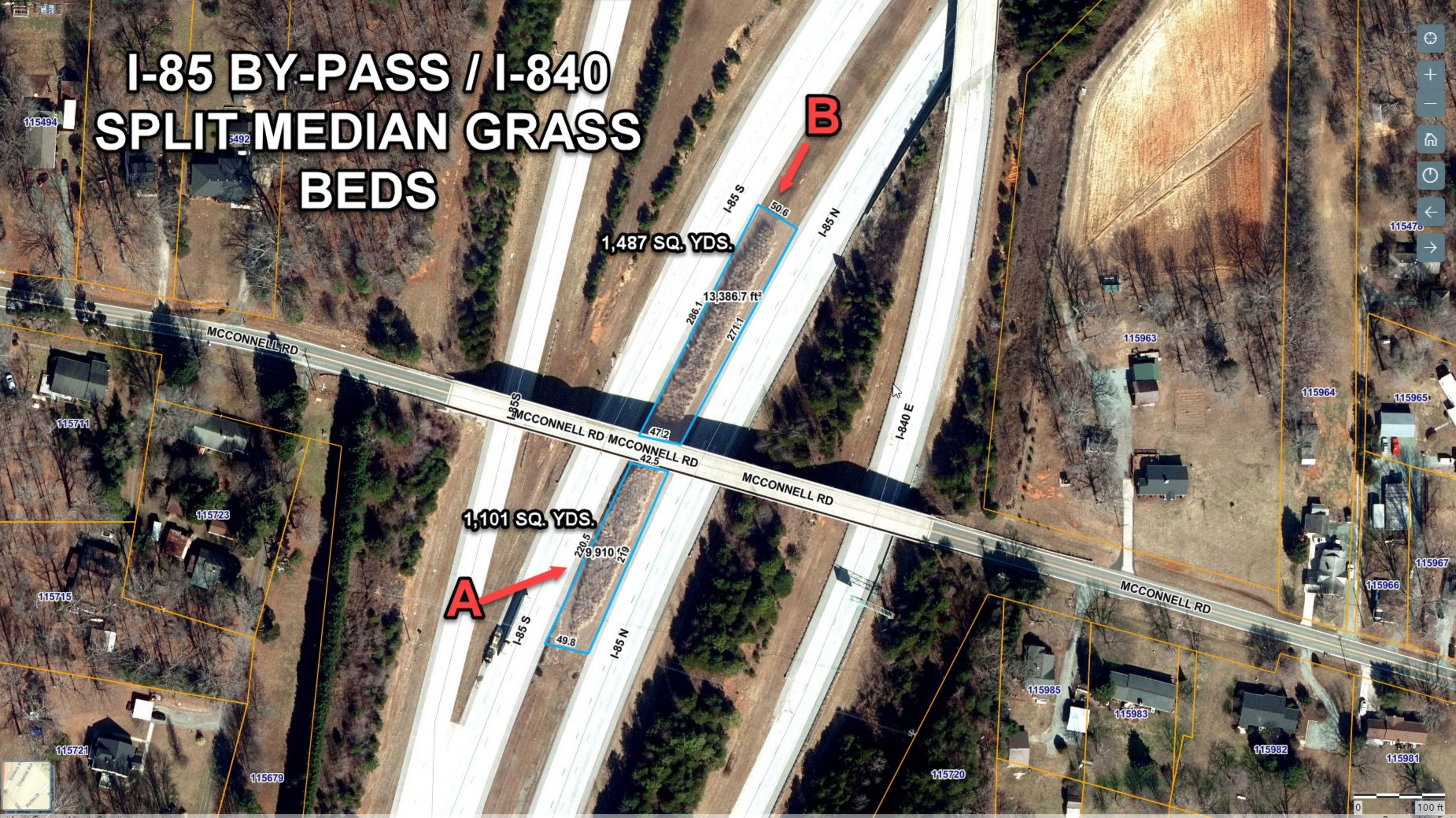


# I-85 BY-PASS / HWY 421 INTERCHANGE

ALL TREES = 85 SQ.  
FT.



# I-85 BY-PASS / I-840 SPLIT MEDIAN GRASS BEDS



1,487 SQ. YDS.

1,101 SQ. YDS.

I-85 S

I-85 N

I-85 S

I-85 N

I-840 E

MCCONNELL RD

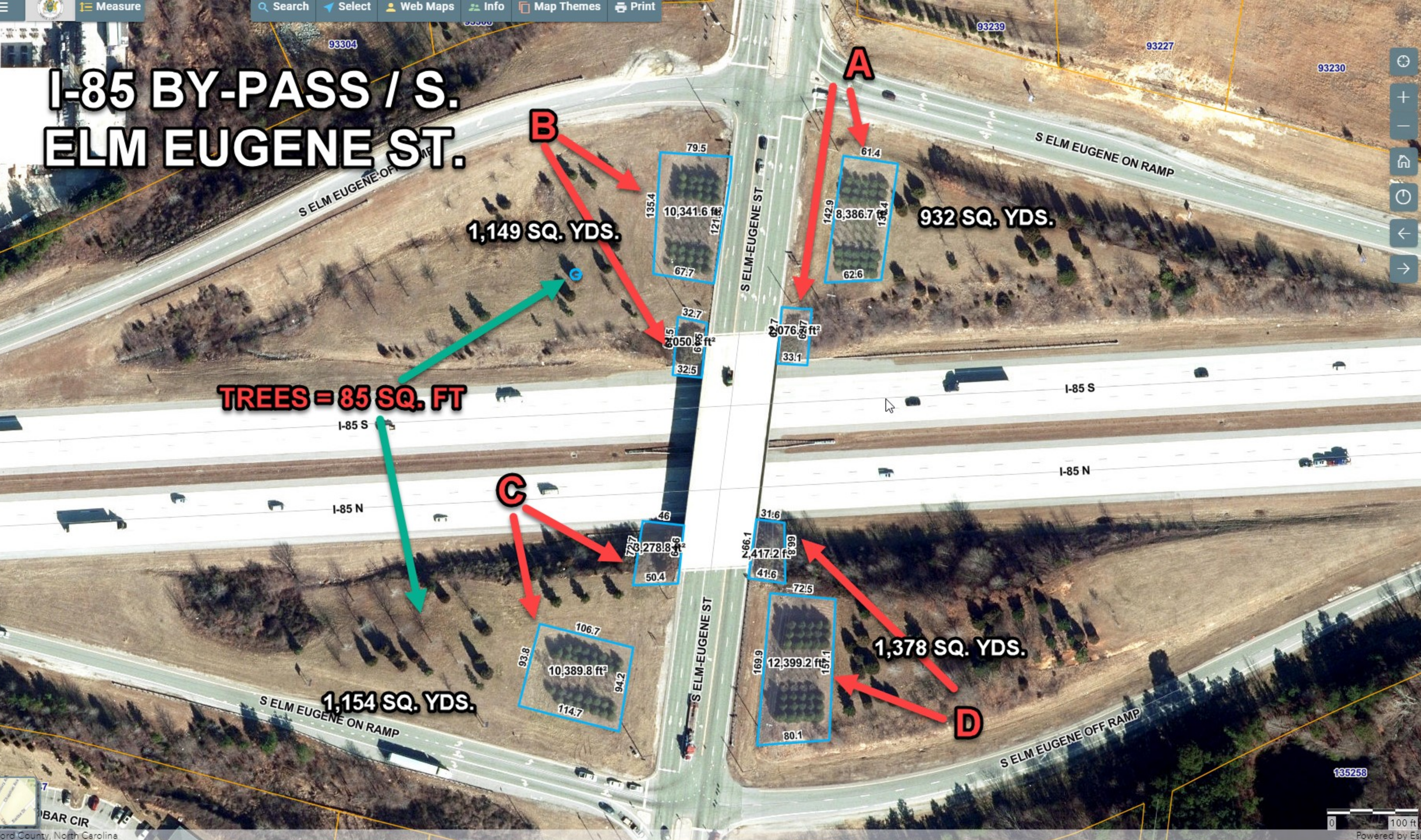
MCCONNELL RD

MCCONNELL RD

MCCONNELL RD

0 100 ft

# I-85 BY-PASS / S. ELM EUGENE ST.



# I-40 BY-PASS / YOUNGS MILL INTERCHANGE

